

# KOMATSU

# KOMTRAX

## KOMATSU WIRELESS MONITORING SYSTEM



# KOMTRAX

**KNOWLEDGE TO HELP YOU  
RUN YOUR BUSINESS**



# What is KOMTRAX?



**KOMTRAX**



(\*) KOMTRAX cannot be installed on the PC09 and is optional on the PC14, PC16 and SK510.



**Introduced in 2006, KOMTRAX is Komatsu's state of the art wireless monitoring system. It gives you an easy way to track your machines, monitor their performance and stay up to date about the status of your equipment. Knowledge gained from KOMTRAX saves you time and maximises your profits.**

- ✓ **100% Komatsu technology** – All KOMTRAX hardware and software solutions are designed and built by Komatsu.
- ✓ **Standard** – We strongly believe in the benefits of telematics: KOMTRAX is now factory-fitted on every new Komatsu machine. (\*)
- ✓ **Reliable & Durable** – Today, more than 500.000 machines worldwide are equipped with the proven KOMTRAX technology, and thousands of customers safely enjoy its advantages.



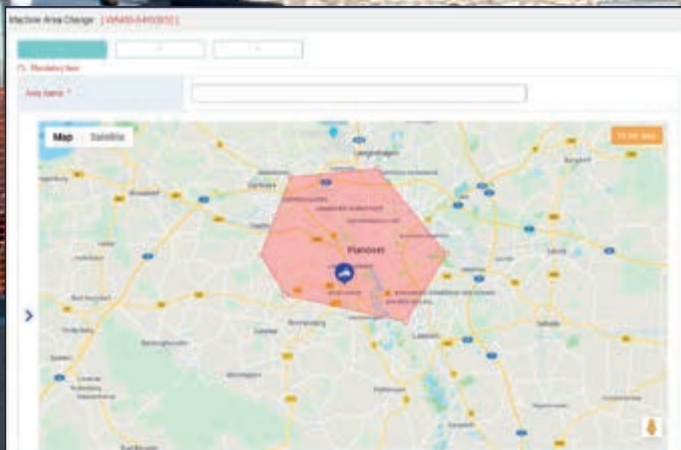


# Security

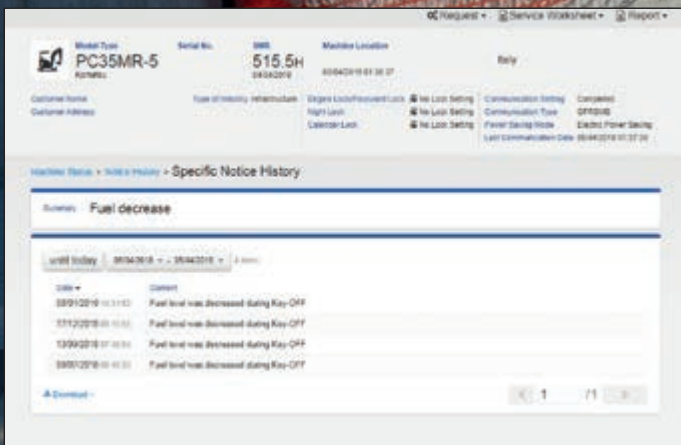
KOMTRAX



Simple and intuitive mapping



Geofencing function



Fuel theft notification



## Keep track of your equipment

KOMTRAX lets you accurately track and log the location and usage of your machines. Information is stored in the system for up to 16 months and it can be retrieved when you need it, providing useful info and answers.

- ✓ **Peace of Mind** – Receive notifications for any unusual location changes.
- ✓ **Engine Lock** – Prevents unauthorized usage.
- ✓ **Activate Geofence** – With this function, an alert is triggered if a machine works outside of a defined area.
- ✓ **Avoid fuel theft** – Starting with EU Stage IV machines, KOMTRAX includes a notification for abnormal fuel decrease when the engine is not running.









## More efficient, more productive

KOMTRAX helps you maximise your fleet's performance. You can reduce your fuel consumption, monitor running hours, keep idling to a minimum, increase productivity - and make your business more profitable.

- ✓ **Operation record** – KOMTRAX contains detailed records for the most relevant KPI, from running hours to idle time, from fuel consumption to operating working mode.
- ✓ **Operator Identification** – Evaluate your operators' performance, to propose specific knowledge and skills training.
- ✓ **Performance optimisation** – Compare the performance of machines working in similar applications to identify opportunities to improve their efficiency.





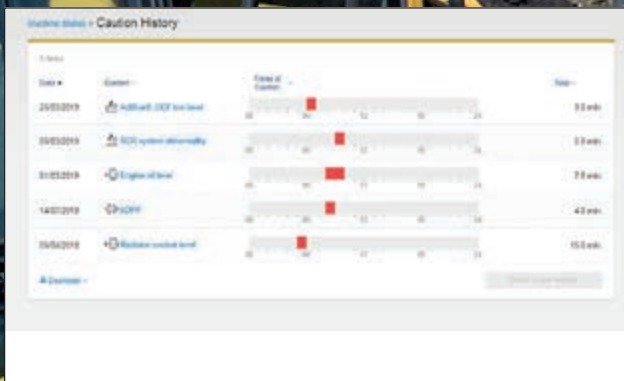




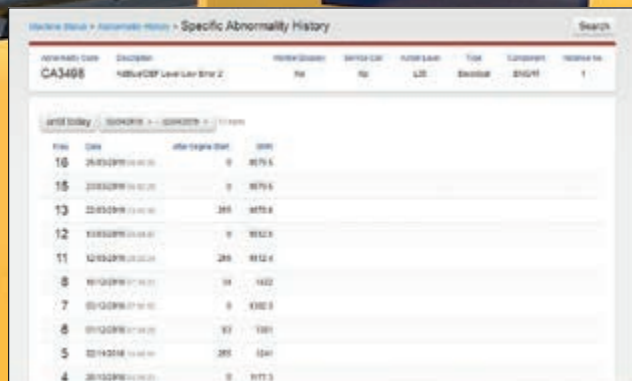
## Keep your equipment up and running

KOMTRAX gives you essential information about your machines' condition. Thanks to this data, Komatsu authorized dealers can provide a quick and accurate service, when you need it.

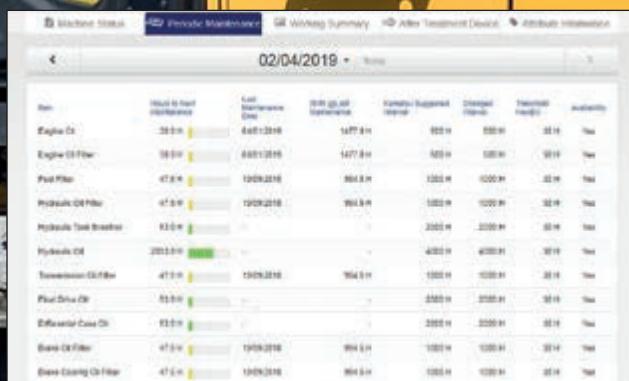
- ✓ **Fault codes** – Detect problems before it's too late.
- ✓ **Service record** – Never miss an oil or filter change and keep track of when maintenance was carried out.
- ✓ **Aftertreatment systems** – Monitor exhaust aftertreatment processes (DPF, AdBlue®, SCR) for total peace of mind.



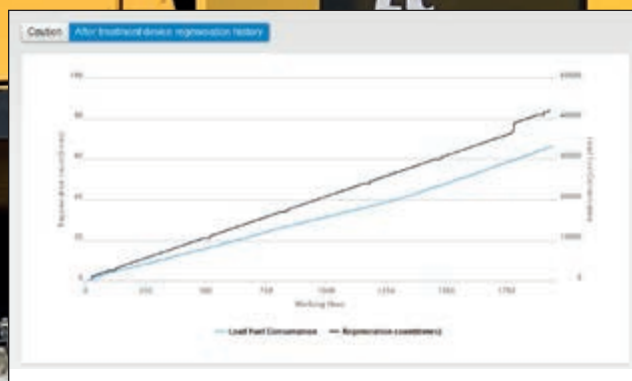
Caution record



Fault code record



Maintenance record



Aftertreatment monitoring: regeneration record

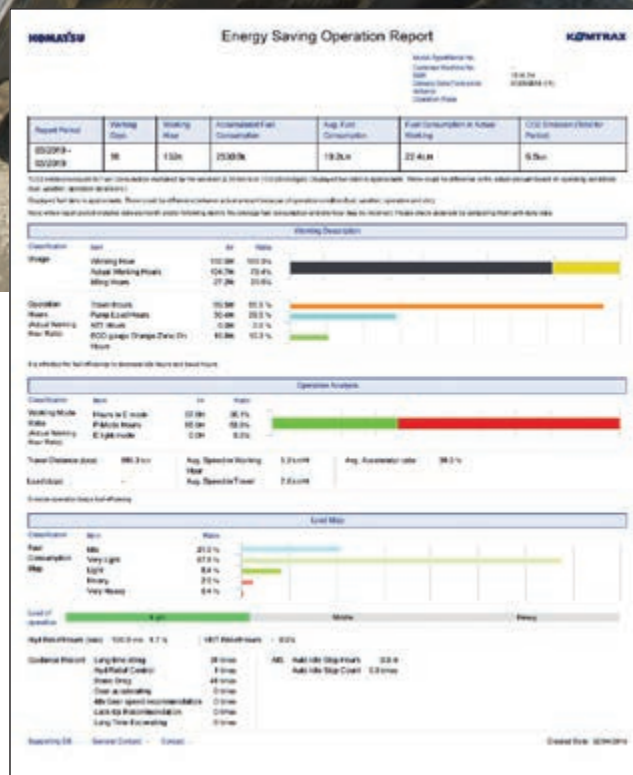


# The power of data



## Turn data into profit

- ✓ **Reporting** – The data in KOMTRAX reports can be turned into useful insights that help you make the right decisions for your business.
- ✓ **Benchmarking** – With KOMTRAX and its large data set, Komatsu can help you find out how your equipment compares to other machines in the field and offer advice and training to improve your fleet's performance.
- ✓ **Application Programming Interface (API)** – Integrate KOMTRAX data into your company's processes and systems with Komatsu data solutions. We can provide an ISO15143-3 compliant API to support your data collection and processing needs.



KOMTRAX energy saving report



Benchmarking report



## KOMTRAX Plus

# KOMTRAX Plus

**KOMTRAX Plus is an advanced remote monitoring system that applies to all new-generation Komatsu quarry and mining large machines including:**

**Haul trucks:** HD465, HD605, HD785, HD1500, 730E, 830E

**Excavators/shovels:** PC1250, PC2000, PC3000, PC4000, PC5500 and PC8000

**Wheel loaders:** WA600, WA800, WA900 and WA1200

**Dozers:** D375A and D475A

## Why KOMTRAX Plus?

KOMTRAX Plus continuously monitors your machine's settings, condition, fuel usage and performance along with operating practices. This comprehensive data set is designed to help prolong your quarry and mining machine's life, improve its efficiency and optimise production levels and costs.

## Key features & benefits

- ✓ **Accurate logs and data** – Know when your machine is actually working or merely idling, how well it is producing, and what payloads it delivers.
- ✓ **Reduced maintenance costs** – Any abnormal reading can be addressed preventively to avoid unscheduled downtime.
- ✓ **Safer operations** – Poor or incorrect operator practices (e.g. excessive speed) are highlighted, allowing to schedule additional trainings.
- ✓ **Lower operating costs** – You can fine-tune procedures for operations, site management and machine management.





# Models and Features

Model	Type	Location	Running and idling time	Fuel consumption	Operating mode	Travelling time	Odometer	Attachment usage time	Load factor	Payload system information	Operator ID	Fault codes	Maintenance record	After treatment information	Fuel theft alert	Engine lock	Geofencing	E-mail notifications
D37EX	24		*	*	*	*	*	*	*	*	*	*	*	*	*	*	*	*
D37EXi	24		*	*	*	*	*	*	*	*	*	*	*	*	*	*	*	*
D37PX	24		*	*	*	*	*	*	*	*	*	*	*	*	*	*	*	*
D37PXi	24		*	*	*	*	*	*	*	*	*	*	*	*	*	*	*	*
D51EX	24		*	*	*	*	*	*	*	*	*	*	*	*	*	*	*	*
D51EXi	24		*	*	*	*	*	*	*	*	*	*	*	*	*	*	*	*
D51PX	24		*	*	*	*	*	*	*	*	*	*	*	*	*	*	*	*
D51PXi	24		*	*	*	*	*	*	*	*	*	*	*	*	*	*	*	*
D61EX	24		*	*	*	*	*	*	*	*	*	*	*	*	*	*	*	*
D61EXi	24		*	*	*	*	*	*	*	*	*	*	*	*	*	*	*	*
D61PX	24		*	*	*	*	*	*	*	*	*	*	*	*	*	*	*	*
D61PXi	24		*	*	*	*	*	*	*	*	*	*	*	*	*	*	*	*
D65EX	18		*	*	*	*	*	*	*	*	*	*	*	*	*	*	*	*
D65EXi	18		*	*	*	*	*	*	*	*	*	*	*	*	*	*	*	*
D65PX	18		*	*	*	*	*	*	*	*	*	*	*	*	*	*	*	*
D65PXi	18		*	*	*	*	*	*	*	*	*	*	*	*	*	*	*	*
D65WX	18		*	*	*	*	*	*	*	*	*	*	*	*	*	*	*	*
D85EX	18		*	*	*	*	*	*	*	*	*	*	*	*	*	*	*	*
D85PX	18		*	*	*	*	*	*	*	*	*	*	*	*	*	*	*	*
D85PXi	18		*	*	*	*	*	*	*	*	*	*	*	*	*	*	*	*
D155AX	8		*	*	*	*	*	*	*	*	*	*	*	*	*	*	*	*
D155AXi	8		*	*	*	*	*	*	*	*	*	*	*	*	*	*	*	*
D375A	8		*	*	*	*	*	*	*	*	*	*	*	*	*	*	*	*
D475A	8		*	*	*	*	*	*	*	*	*	*	*	*	*	*	*	*
G6675	7E0		*	*	*	*	*	*	*	*	*	*	*	*	*	*	*	*
H0325	8		*	*	*	*	*	*	*	*	*	*	*	*	*	*	*	*
H0405	8		*	*	*	*	*	*	*	*	*	*	*	*	*	*	*	*
H0465	8		*	*	*	*	*	*	*	*	*	*	*	*	*	*	*	*
H0605	8		*	*	*	*	*	*	*	*	*	*	*	*	*	*	*	*
H0785	8		*	*	*	*	*	*	*	*	*	*	*	*	*	*	*	*
H01500	8		*	*	*	*	*	*	*	*	*	*	*	*	*	*	*	*
HM300	5		*	*	*	*	*	*	*	*	*	*	*	*	*	*	*	*
HM400	5		*	*	*	*	*	*	*	*	*	*	*	*	*	*	*	*
PC14R <sup>2</sup>	3, 3HS		*	*	*	*	*	*	*	*	*	*	*	*	*	*	*	*
PC16R <sup>2</sup>	3, 3HS		*	*	*	*	*	*	*	*	*	*	*	*	*	*	*	*
PC18MR	3E		*	*	*	*	*	*	*	*	*	*	*	*	*	*	*	*
PC22MR	3E		*	*	*	*	*	*	*	*	*	*	*	*	*	*	*	*
PC26MR	3		*	*	*	*	*	*	*	*	*	*	*	*	*	*	*	*
PC30MR	5		*	*	*	*	*	*	*	*	*	*	*	*	*	*	*	*
PC35MR	5		*	*	*	*	*	*	*	*	*	*	*	*	*	*	*	*
PC45MR	5		*	*	*	*	*	*	*	*	*	*	*	*	*	*	*	*
PC55MR	5		*	*	*	*	*	*	*	*	*	*	*	*	*	*	*	*
PC58MR	5		*	*	*	*	*	*	*	*	*	*	*	*	*	*	*	*
PC78US	10		*	*	*	*	*	*	*	*	*	*	*	*	*	*	*	*
PC80MR	5		*	*	*	*	*	*	*	*	*	*	*	*	*	*	*	*
PC88MR	10		*	*	*	*	*	*	*	*	*	*	*	*	*	*	*	*
PC138US	11		*	*	*	*	*	*	*	*	*	*	*	*	*	*	*	*
PC170LC	11		*	*	*	*	*	*	*	*	*	*	*	*	*	*	*	*
PC210	11		*	*	*	*	*	*	*	*	*	*	*	*	*	*	*	*
PC210LC	11		*	*	*	*	*	*	*	*	*	*	*	*	*	*	*	*
PC210LCD	11		*	*	*	*	*	*	*	*	*	*	*	*	*	*	*	*
PC210LCi	11		*	*	*	*	*	*	*	*	*	*	*	*	*	*	*	*
PC210NLC	11		*	*	*	*	*	*	*	*	*	*	*	*	*	*	*	*
HB215LC	3		*	*	*	*	*	*	*	*	*	*	*	*	*	*	*	*
PC228USLC	11		*	*	*	*	*	*	*	*	*	*	*	*	*	*	*	*
PC230NHD	11		*	*	*	*	*	*	*	*	*	*	*	*	*	*	*	*
PC240LC	11		*	*	*	*	*	*	*	*	*	*	*	*	*	*	*	*
PC240LCD	11		*	*	*	*	*	*	*	*	*	*	*	*	*	*	*	*
PC240NLC	11		*	*	*	*	*	*	*	*	*	*	*	*	*	*	*	*
PC240NLCD	11		*	*	*	*	*	*	*	*	*	*	*	*	*	*	*	*

Model	Type	Location	Running and idling time	Fuel consumption	Operating mode	Travelling time	Odometer	Attachment usage time	Load factor	Payload system information	Operator ID	Fault codes	Maintenance record	After treatment information	Fuel theft alert	Engine lock	Geofencing	E-mail notifications
PC290LC	11		*	*	*	*	*	*	*	*	*	*	*	*	*	*	*	*
PC290LCD	11		*	*	*	*	*	*	*	*	*	*	*	*	*	*	*	*
PC290LCi	11		*	*	*	*	*	*	*	*	*	*	*	*	*	*	*	*
PC290NLC	11		*	*	*	*	*	*	*	*	*	*	*	*	*	*	*	*
PC290NLCD	11		*	*	*	*	*	*	*	*	*	*	*	*	*	*	*	*
PC290NLCi	11		*	*	*	*	*	*	*	*	*	*	*	*	*	*	*	*
PC360LC	11		*	*	*	*	*	*	*	*	*	*	*	*	*	*	*	*
PC360LCD	11		*	*	*	*	*	*	*	*	*	*	*	*	*	*	*	*
PC360LCi	11		*	*	*	*	*	*	*	*	*	*	*	*	*	*	*	*
PC360NLC	11		*	*	*	*	*	*	*	*	*	*	*	*	*	*	*	*
PC360NLCD	11		*	*	*	*	*	*	*	*	*	*	*	*	*	*	*	*
HB365LC	3E0		*	*	*	*	*	*	*	*	*	*	*	*	*	*	*	*
HB365NLC	3E0		*	*	*	*	*	*	*	*	*	*	*	*	*	*	*	*
PC390HRD	11		*	*	*	*	*	*	*	*	*	*	*	*	*	*	*	*
PC490	11		*	*	*	*	*	*	*	*	*	*	*	*	*	*	*	*
PC490HRD	11		*	*	*	*	*	*	*	*	*	*	*	*	*	*	*	*
PC490LC	11		*	*	*	*	*	*	*	*	*	*	*	*	*	*	*	*
PC490LCD	11		*	*	*	*	*	*	*	*	*	*	*	*	*	*	*	*
PC700LC	11		*	*	*	*	*	*	*	*	*	*	*	*	*	*	*	*
PC1250	11		*	*	*	*	*	*	*	*	*	*	*	*	*	*	*	*
PC2000	8		*	<sup>1</sup>	*	<sup>1</sup>	<sup>1</sup>	*	*	*	*	*	*	*	*	*	*	*
PW98MR	10		*	*	*	*	*	*	*	*	*	*	*	*	*	*	*	*
PW118MR	11		*	*	*	*	*	*	*	*	*	*	*	*	*	*	*	*
PW148	11		*	*	*	*	*	*	*	*	*	*	*	*	*	*	*	*
PW158	11		*	*	*	*	*	*	*	*	*	*	*	*	*	*	*	*
PW160	11		*	*	*	*	*	*	*	*	*	*	*	*	*	*	*	*
PW180	11		*	*	*	*	*	*	*	*	*	*	*	*	*	*	*	*
SK510 <sup>2</sup>	5		*	*	*	*	*	*	*	*	*	*	*	*	*	*	*	*
SK714	5		*	*	*	*	*	*	*	*	*	*	*	*	*	*	*	*
SK815	5E0		*	*	*	*	*	*	*	*	*	*	*	*	*	*	*	*
SK820	5E0		*	*	*	*	*	*	*	*	*	*	*	*	*	*	*	*
WA70M	8		*	*	*	*	*	*	*	*	*	*	*	*	*	*	*	*
WA80M	8		*	*	*	*	*	*	*	*	*	*	*	*	*	*	*	*
WA100M	8		*	*	*	*	*	*	*	*	*	*	*	*	*	*	*	*
WA200	8		*	*	*	*	*	*	*	*	*	*	*	*	*	*	*	*
WA270	8		*	*	*	*	*	*	*	*	*	*	*	*	*	*	*	*
WA320	8		*	*	*	*	*	*	*	*	*	*	*	*	*	*	*	*
WA380	8		*	*	*	*	*	*	*	*	*	*	*	*	*	*	*	*
WA470	8		*	*	*	*	*	*	*	*	*	*	*	*	*	*	*	*
WA475	10		*	*	*	*	*	*	*	*	*	*	*	*	*	*	*	*
WA480	8		*	*	*	*	*	*	*	*	*	*	*	*	*	*	*	*
WA500	8		*	*	*	*	*	*	*	*	*	*	*	*	*	*	*	*
WA600	8		*	*	*	*	*	*	*	*	*	*	*	*	*	*	*	*
WA800	8		*	*	*	*	*	*	*	*	*	*	*	*	*	*	*	*
WA900	8		*	*	*	*	*	*	*	*	*	*	*	*	*	*	*	*
WB93R	5E0		*	*	*	*	*	*	*	*	*	*	*	*	*	*	*	*
WB93S	5E0		*	*	*	*	*	*	*	*	*	*	*	*	*	*	*	*
WB97R	5E0		*	*	*	*	*	*	*	*	*	*	*	*	*	*	*	*
WB97S	5E0		*	*	*	*	*	*	*	*	*	*	*	*	*	*	*	*
WB93R	8		*	*	*	*	*	*	*	*	*	*	*	*	*	*	*	*
WB93S	8		*	*	*	*	*	*	*	*	*	*	*	*	*	*	*	*
WB97R	8		*	*	*	*	*	*	*	*	*	*	*	*	*	*	*	*
WB97S	8		*	*	*	*	*	*	*	*	*	*	*	*	*	*	*	*

This is a summary of the most important functions. Additional functions may be available for each model.

- <sup>1</sup>) Available through KOMTRAX Plus
- <sup>2</sup>) KOMTRAX available as an option
- <sup>3</sup>) Idling time not available
- <sup>4</sup>) Only for payload system fitted by factory (exl. RDS system)

Browse KOMTRAX anywhere, anytime on your favourite device

Recommended browsers are Internet Explorer 11 and Google Chrome.



[www.komtrax.eu](http://www.komtrax.eu)



[m-komtrax.eu](http://m-komtrax.eu)



Your Komatsu partner:



**Komatsu Europe International N.V.**  
 Mechelsesteenweg 586  
 B-1800 VILVOORDE (BELGIUM)  
 Tel. +32-2-255 24 11  
 Fax +32-2-252 19 81  
[www.komatsu.eu](http://www.komatsu.eu)